

PYCRL Antibody (C-term)
Purified Rabbit Polyclonal Antibody (Pab)
Catalog # AP21368b

Specification

PYCRL Antibody (C-term) - Product Information

Application	WB,E
Primary Accession	Q53H96
Reactivity	Human
Host	Rabbit
Clonality	polyclonal
Isotype	Rabbit IgG
Calculated MW	28663

PYCRL Antibody (C-term) - Additional Information

Gene ID 65263

Other Names

Pyrroline-5-carboxylate reductase 3, P5C reductase 3, P5CR 3, Pyrroline-5-carboxylate reductase-like protein, PYCRL

Target/Specificity

This PYCRL antibody is generated from a rabbit immunized with a KLH conjugated synthetic peptide between 221-255 amino acids from the C-terminal region of human PYCRL.

Dilution

WB~~1:2000

E~~Use at an assay dependent concentration.

Format

Purified polyclonal antibody supplied in PBS with 0.09% (W/V) sodium azide. This antibody is purified through a protein A column, followed by peptide affinity purification.

Storage

Maintain refrigerated at 2-8°C for up to 2 weeks. For long term storage store at -20°C in small aliquots to prevent freeze-thaw cycles.

Precautions

PYCRL Antibody (C-term) is for research use only and not for use in diagnostic or therapeutic procedures.

PYCRL Antibody (C-term) - Protein Information

Name PYCR3 ([HGNC:25846](#))

Function Oxidoreductase that catalyzes the last step in proline biosynthesis, which corresponds to the reduction of pyrroline-5- carboxylate (P5C) to L-proline using NAD(P)H (PubMed:[23024808](#),

PubMed:[36414121](#)). Proline is synthesized from either glutamate or ornithine; both are converted to P5C, and then to proline via pyrroline-5-carboxylate reductases (PYCRs) (PubMed:[23024808](#)). PYCR3 is exclusively linked to the biosynthesis of proline from ornithine (PubMed:[23024808](#)).

Cellular Location

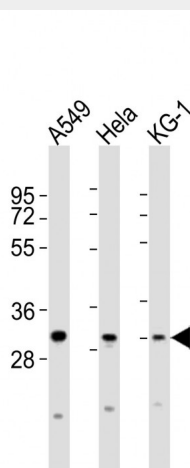
Cytoplasm.

PYCRL Antibody (C-term) - Protocols

Provided below are standard protocols that you may find useful for product applications.

- [Western Blot](#)
- [Blocking Peptides](#)
- [Dot Blot](#)
- [Immunohistochemistry](#)
- [Immunofluorescence](#)
- [Immunoprecipitation](#)
- [Flow Cytometry](#)
- [Cell Culture](#)

PYCRL Antibody (C-term) - Images



All lanes : Anti-PYCRL Antibody (C-term) at 1:2000 dilution Lane 1: A549 whole cell lysates Lane 2: HeLa whole cell lysates Lane 3: KG-1 whole cell lysates Lysates/proteins at 20 µg per lane. Secondary Goat Anti-Rabbit IgG, (H+L), Peroxidase conjugated at 1/10000 dilution Predicted band size : 29 kDa Blocking/Dilution buffer: 5% NFD/MTBST.

PYCRL Antibody (C-term) - References

Ota T.,et al.Nat. Genet. 36:40-45(2004).
Nusbaum C.,et al.Nature 439:331-335(2006).
Suzuki Y.,et al.Submitted (APR-2005) to the EMBL/GenBank/DDBJ databases.
Bechtel S.,et al.BMC Genomics 8:399-399(2007).
Burkard T.R.,et al.BMC Syst. Biol. 5:17-17(2011).